

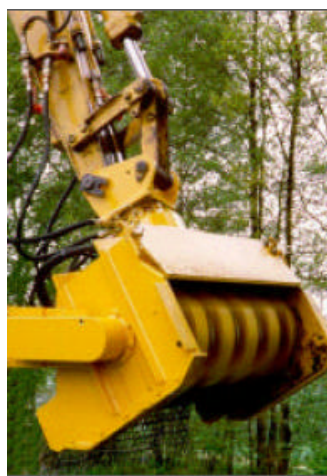
## Universal application: Mowing of grass and weeds plus shrub cutting

Mowing down of grass and weeds as well as shrub cutting along unyielding terrain or at embankments requires cost intensive manual labour. However, this can be reduced to a fraction when using the mulcher attachment from Windhoff GmbH.

Proven components as they are used in our other work attachments provide for a flexible application spectrum and for highly efficient operation.



The application spectrum covers all types of grass mowing, weed cutting and shrub cutting. A flap at the front end of the equipment can be adjusted for optimum mulching of shrubs and branches.



The fully rotating drive module caters for most complex geometries along the track side.

The use of the mulcher attachment does not require any changes or modifications to the excavator's hydraulic system.

Any desired motion can be realised when using the mounting module for the AST-8 ballast tamping.

### Technical Data:

Length	: 1,000 mm
Width	: 1,500 mm
Height	: ca. 1,350 mm
Working width	: 1,200 mm
Number of flails	: 20
Speed	: 1,800 Rpm
Weight	: ca. 880 kg
<b>Hydraulic</b>	
<i>Drive motor</i>	
Oil volume, constant	: 75 l / min
Pressure	: 150 bar
<i>Mulcher drive</i>	
Flow volume	: 50 l / min

The use of cutting flails made from high-quality steel and machined for heavy-duty cutting yield an extended service life for the mulcher with a minimum of servicing.

Quick-connection hydraulic couplers and the use of quick-mounting coupler modules facilitate and expedite the use of the mulcher with a crane or excavator.